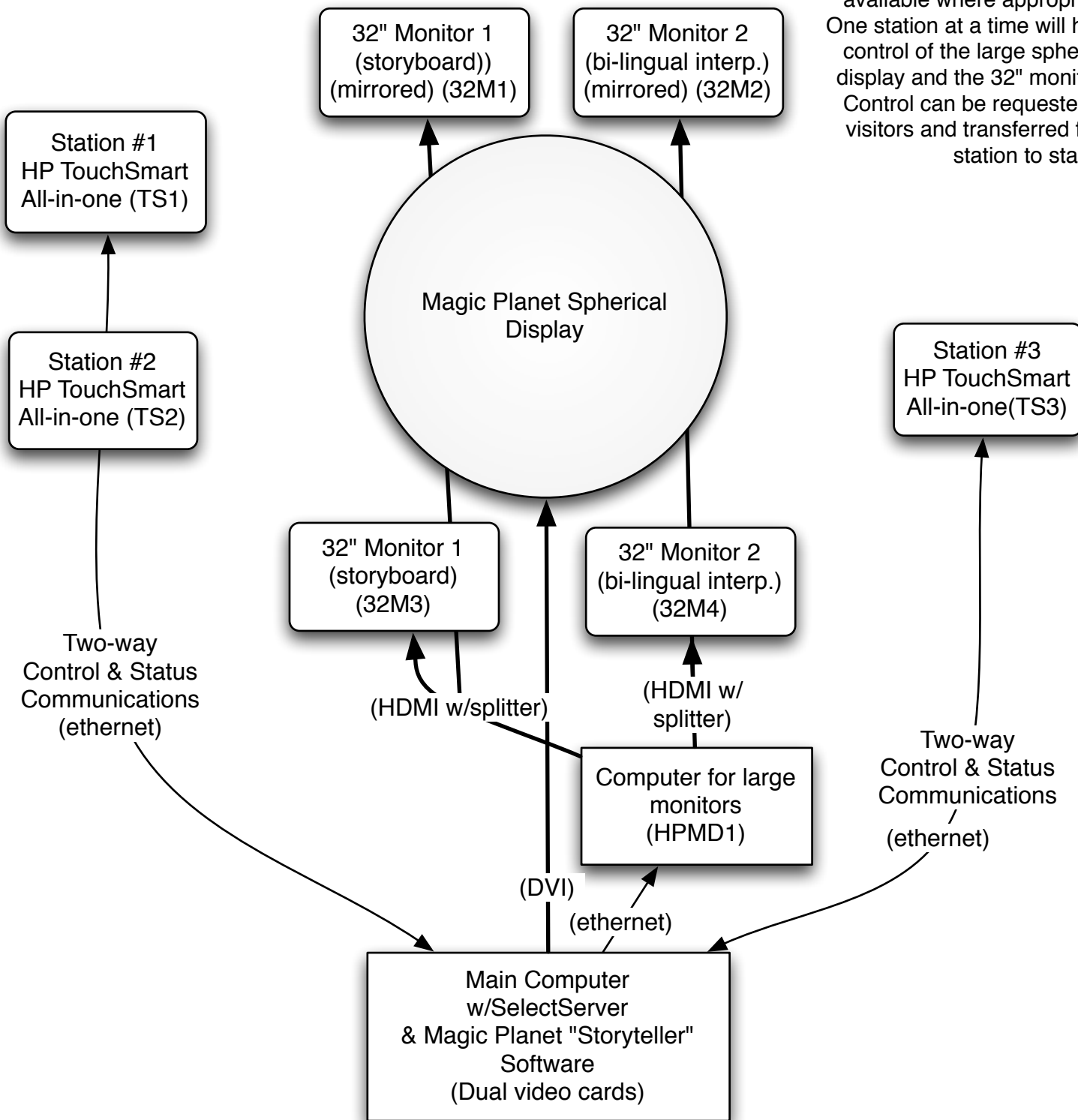


A Flash based program will allow visitors to select from a menu of images/data sets. Orb controls such as rotate, play, stop, etc. will be available where appropriate. One station at a time will have control of the large spherical display and the 32" monitors. Control can be requested by visitors and transferred from station to station.



The Magic Planet is powered from the main computer. This computer also runs the SelectServer software and manages visitor control of the sphere display and the 32" monitors from the HP TouchSmart Stations. The computer for the large monitors has a Flash program that "listens" for updates. The main computer sends information about what images and text to display.